

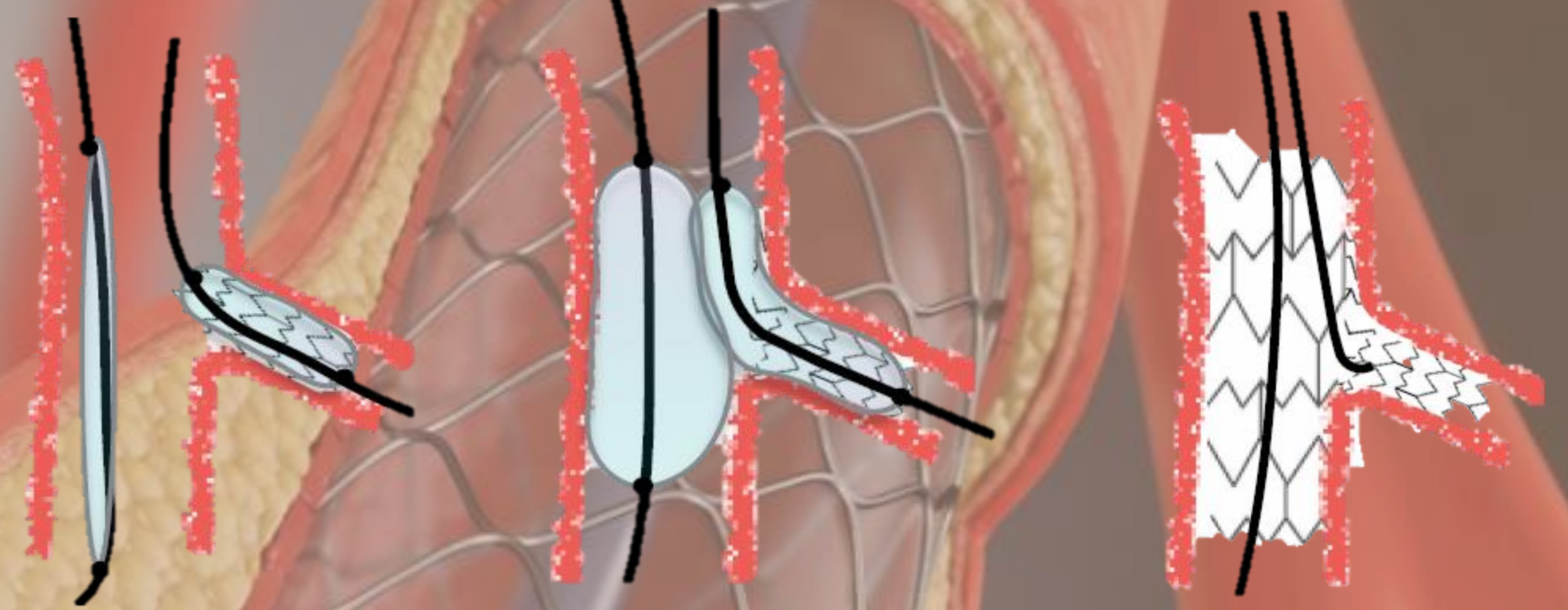
Percutaneous Coronary Interventions

Evald Høj Christiansen MD PhD evald.christiansen@dadlnet.dk, Ashkan Eftekhari MD PhD ashkan.eftekhari@vest.rm.dk, Niels Ramsing Holm MD, niels.holm@clin.au.dk
Department of Cardiology, Aarhus University Hospital

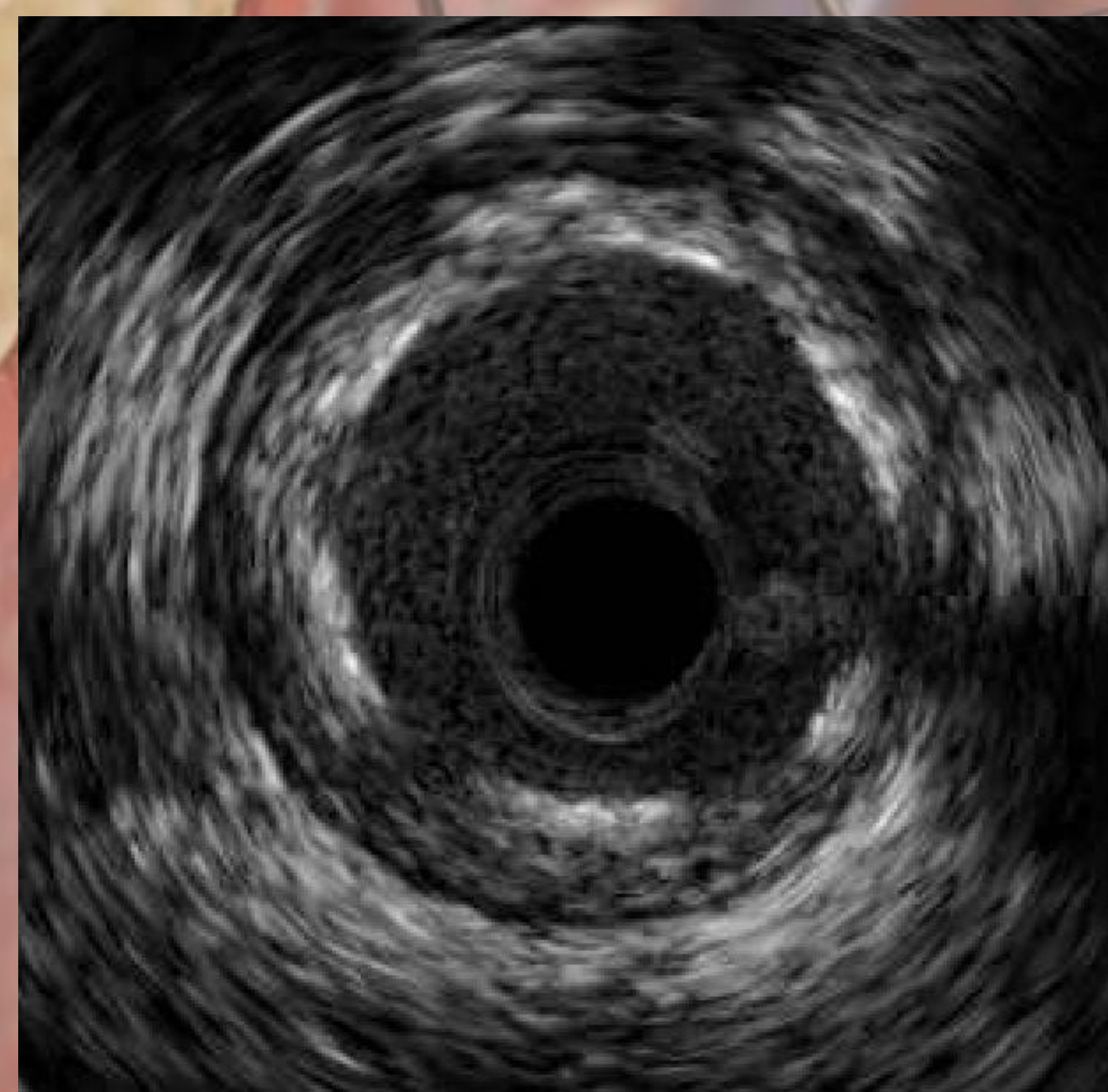
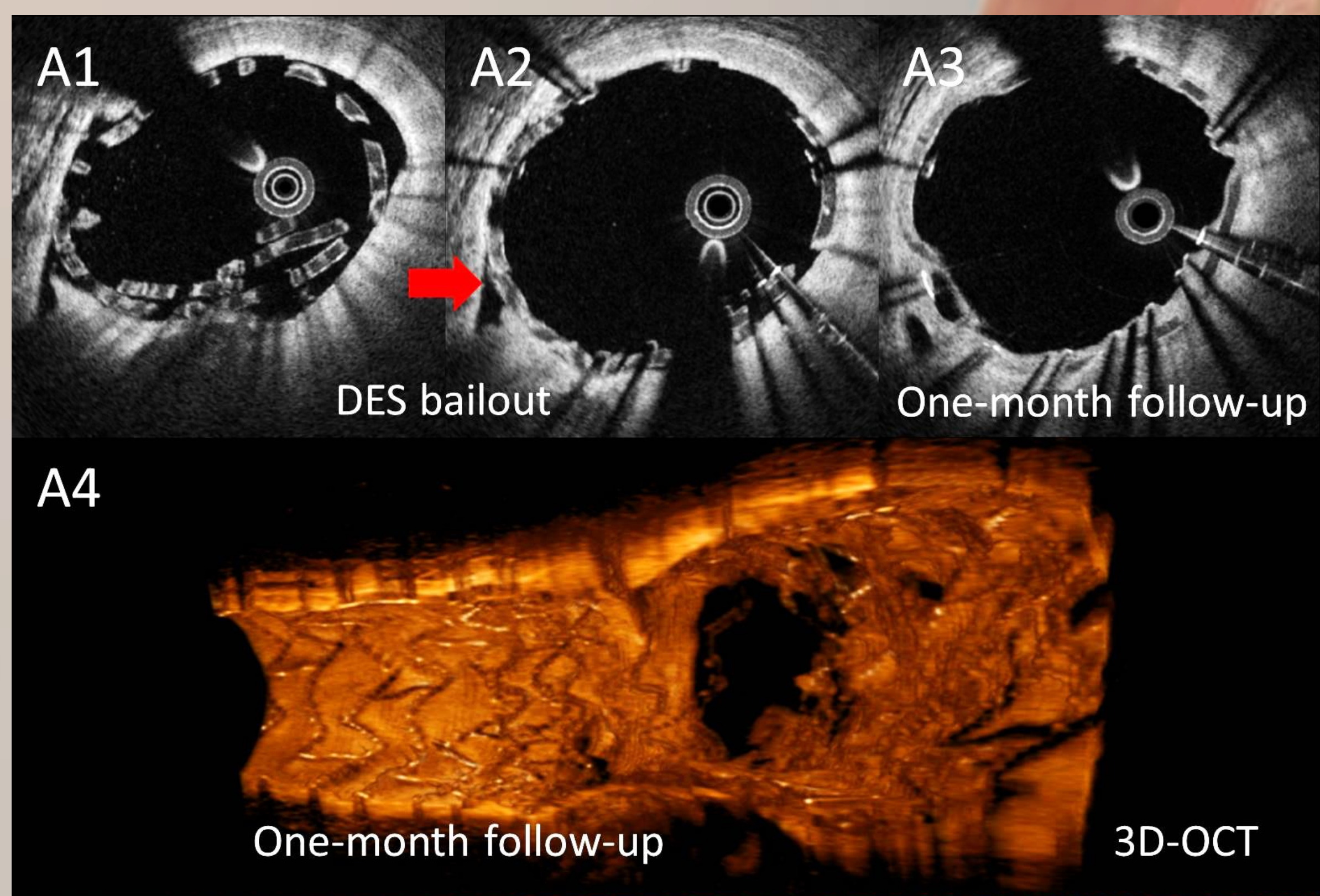
PCI-research

- 2700 PCI procedures a year
- 3 active randomized controlled trials with 4000 pts.
- Collaboration with 70 international centres

Study Protocol for complex PCI treatment in the OCTOBER trial



Coronary Imaging



Contact

Emil Nielsen Holck: Eh@clin.au.dk

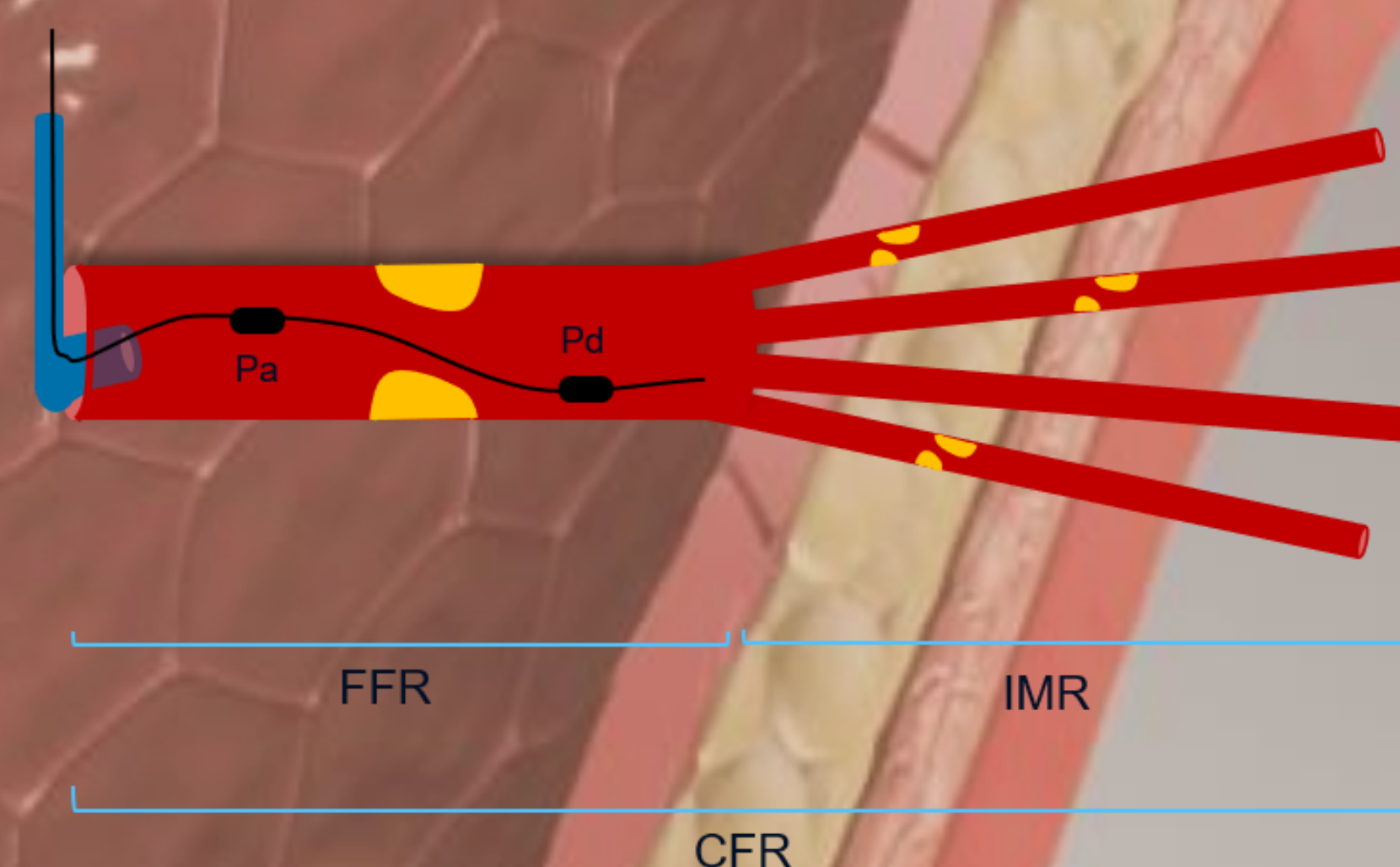
Omeed Neghabat: omeed.neghabat@clin.au.dk

Lene Andreasen: lene.nyhus@clin.au.dk

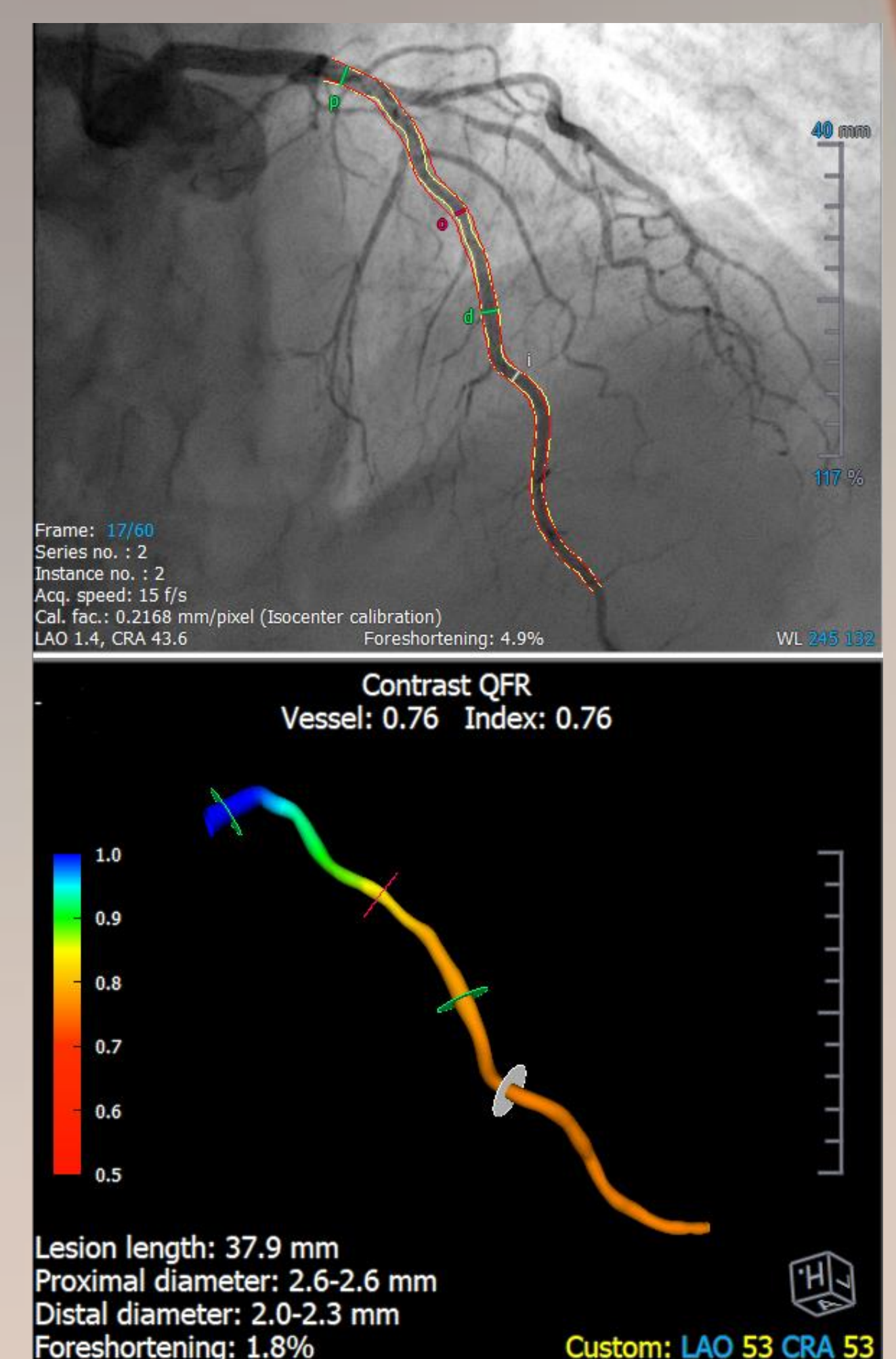
Coronary Physiology

Coronary physiology is used to determine the significance of stenosis on coronary blood flow and the need for treatment with PCI or surgery.

Physiological measurements



Computed physiology



Contact

Salma Karim: salma_karim@clin.au.dk

Jelmer Westra: jelmer.westra@clin.au.dk

Birgitte Krogsgaard: birgitte.krogsgaard@clin.au.dk

